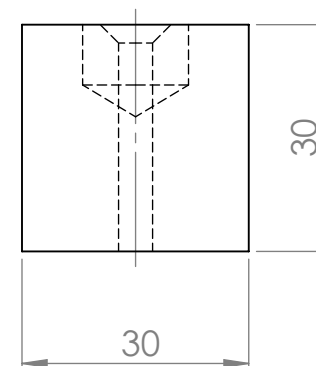



2 x ϕ 4.50 THRU ALL
 \sphericalangle ϕ 9.40 X 90°



**SolidWorks Educational Edition.
 For Instructional Use Only.**

UNLESS OTHERWISE SPECIFIED: DIMENSIONS ARE IN MILLIMETERS SURFACE FINISH: TOLERANCES: LINEAR: DIN ISO 2768-m ANGULAR:		Universiteit Gent Vakgroep Fysica & Sterrenkunde Krijgslaan 281 S9 B-9000 Gent BELGIUM +32 (0)9 264 47 74			
DRAWN :		TITLE:			
NAME	GW	<h1 style="text-align: center;">South Pivot Point</h1>			
DATE	11/2/14				
FINISH:	Anodise Black				
MATERIAL:	Alu 30x30mm	DWG NO.	SouthPivotBlock	A4	
www.kijkerbouw.be		SCALE:1:1	SHEET 1 OF 1		