



**reproducible
software deployment
for HPC**

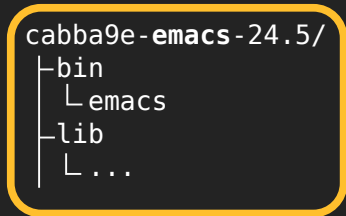
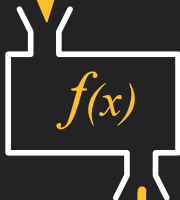
**Ricardo Wurmus + Altuna Akalin
3rd EasyBuild User Meeting, 2018, Amsterdam**



headers
sources
build tools
libraries
...



headers
sources
build tools
libraries
...



Same inputs?

```
cabba9e-emacs-24.5/
```

```
| bin  
|  └─ emacs  
└─ lib  
    └─ ...
```

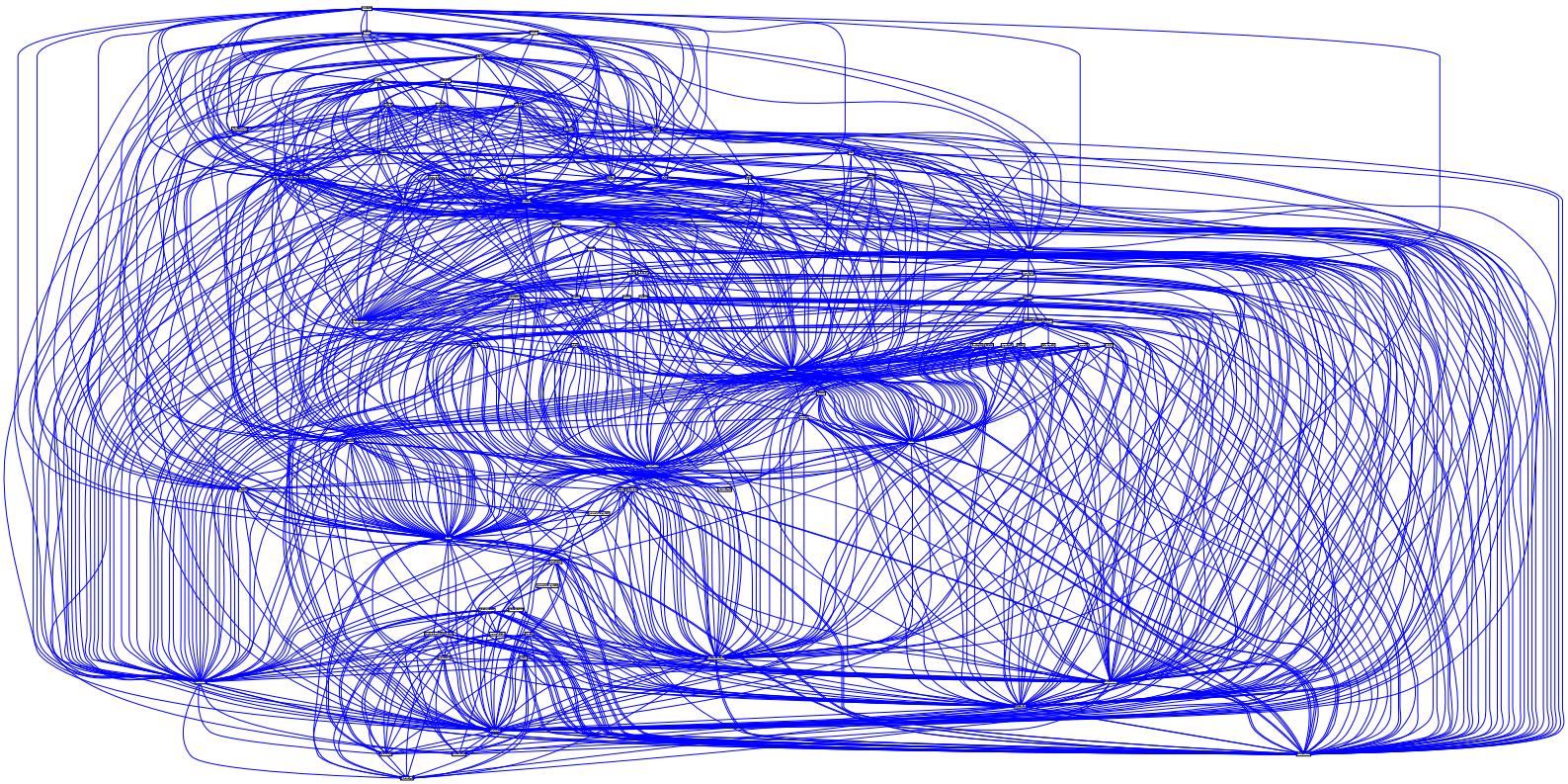
Same output!

**Different
inputs?**

```
dedbeef-emacs-24.5/
```

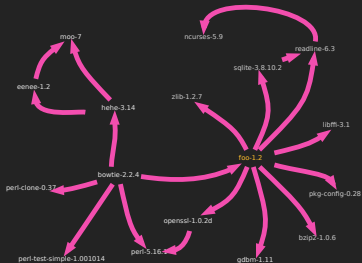
```
| bin  
|  └─ emacs  
└─ lib  
    └─ ...
```

**Different
outputs**



Scientists

guix package **-i** foo **--with-input**
hello=bye



Scientists

`guix package --profile`

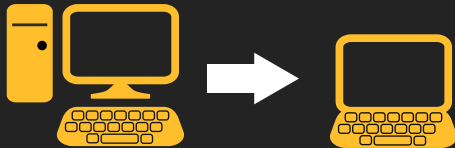
Scientists

`guix package --manifest`

```
(specifications->manifest
  (list "samtools"
        "star"
        "r-minimal"
        "r-rcas"))
```

Scientists

`guix package --manifest`



Scientists

per-project profiles

fully specified environments

describe, share, reproduce

precision experimentation

Developers

guix environment hello

--ad-hoc

--container

Developers

```
guix build --sources foo
```

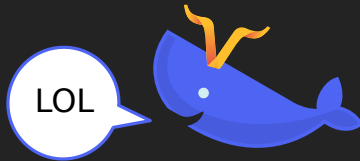
```
guix build foo --with-sources /my/foo
```

Developers

guix pack salmon sailfish star

Developers

guix pack --format docker
salmon sailfish star



HPC admins

How much space
does this need?

guix size
guix graph

But why is
this so large?

What did they really
mean by "lightweight"?

HPC admins

remove only
provably unused
software

guix gc

what variants
are in use?

what depends on
this vulnerable
package?

HPC admins

No more version/variant conflicts: let the users decide

Keep track of installed and unused applications

Save space with deduplication

No more trouble with environment modules

Let's talk!

#guix on **irc.freenode.net**

<https://hpc.guixsd.org>

ricardo.wurmus@mdc-berlin.de

/home/rekado/.guix-profile

/var/guix/...

guix-profile

42

/gnu/store

hscq14x...-profile

bin

samtools

bowtie2

rhrdst11m...-samtools-1.2

bin

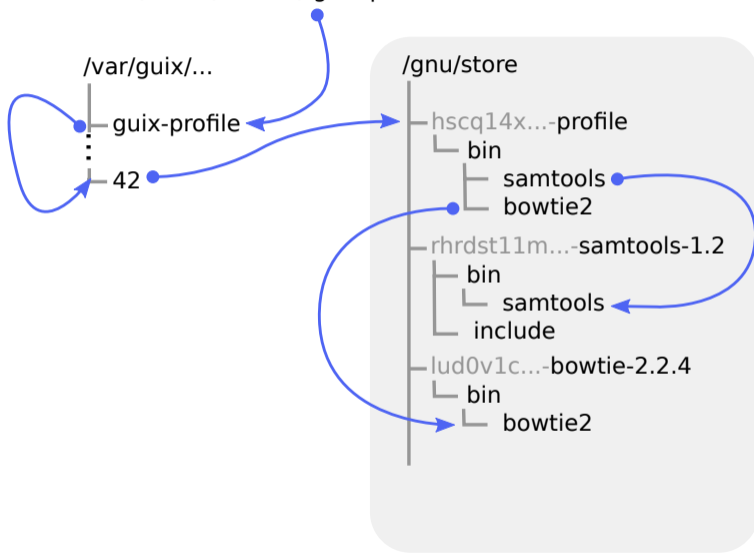
samtools

include

lud0v1c...-bowtie-2.2.4

bin

bowtie2



/home/rekado/.guix-profile

/var/guix/...

guix-profile

42

43

/gnu/store

hscq14x...-profile

bin

samtools

bowtie2

rhrdst11m...-samtools-1.2

bin

samtools

include

lud0v1c...-bowtie-2.2.4

bin

bowtie2

z3braf1sh...-profile

bin

samtools

/home/rekado/.guix-profile

/var/guix/...

guix-profile

42

43

/gnu/store

hscq14x...-profile

└─ bin

└─ samtools

└─ bowtie2

rhrdst11m...-samtools-1.2

└─ bin

└─ samtools

└─ include

lud0v1c...-bowtie-2.2.4

└─ bin

└─ bowtie2

z3braf1sh...-profile

└─ bin

└─ samtools

/home/rekado/.guix-profile

/var/guix/...

guix-profile

43

/gnu/store

hscq14x...-profile

bin

samtools

bowtie2

rhrdst11m...-samtools-1.2

bin

samtools

include

lud0v1c...-bowtie-2.2.4

bin

bowtie2

z3braf1sh...-profile

bin

samtools

/home/rekado/.guix-profile

/var/guix/...

guix-profile

43

/gnu/store

rhrdst11m...-samtools-1.2

bin

└─ samtools

include

lud0v1c...-bowtie-2.2.4

bin

└─ bowtie2

z3braf1sh...-profile

bin

└─ samtools

/home/rekado/.guix-profile

/var/guix/...

guix-profile

43

/gnu/store

rhrdst11m...-samtools-1.2

bin

└─ samtools

└─ include

z3braf1sh...-profile

└─ bin

└─ samtools

